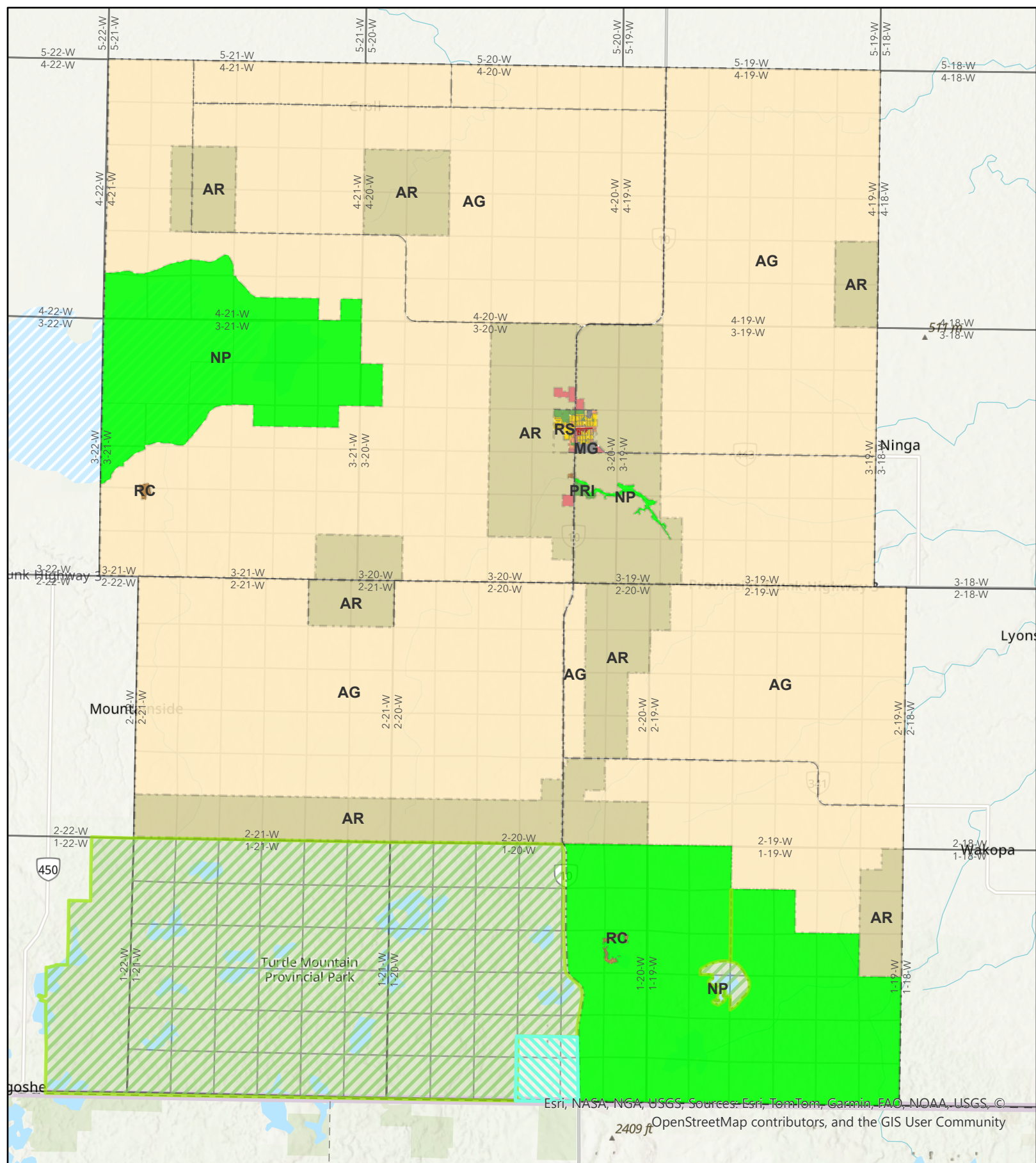


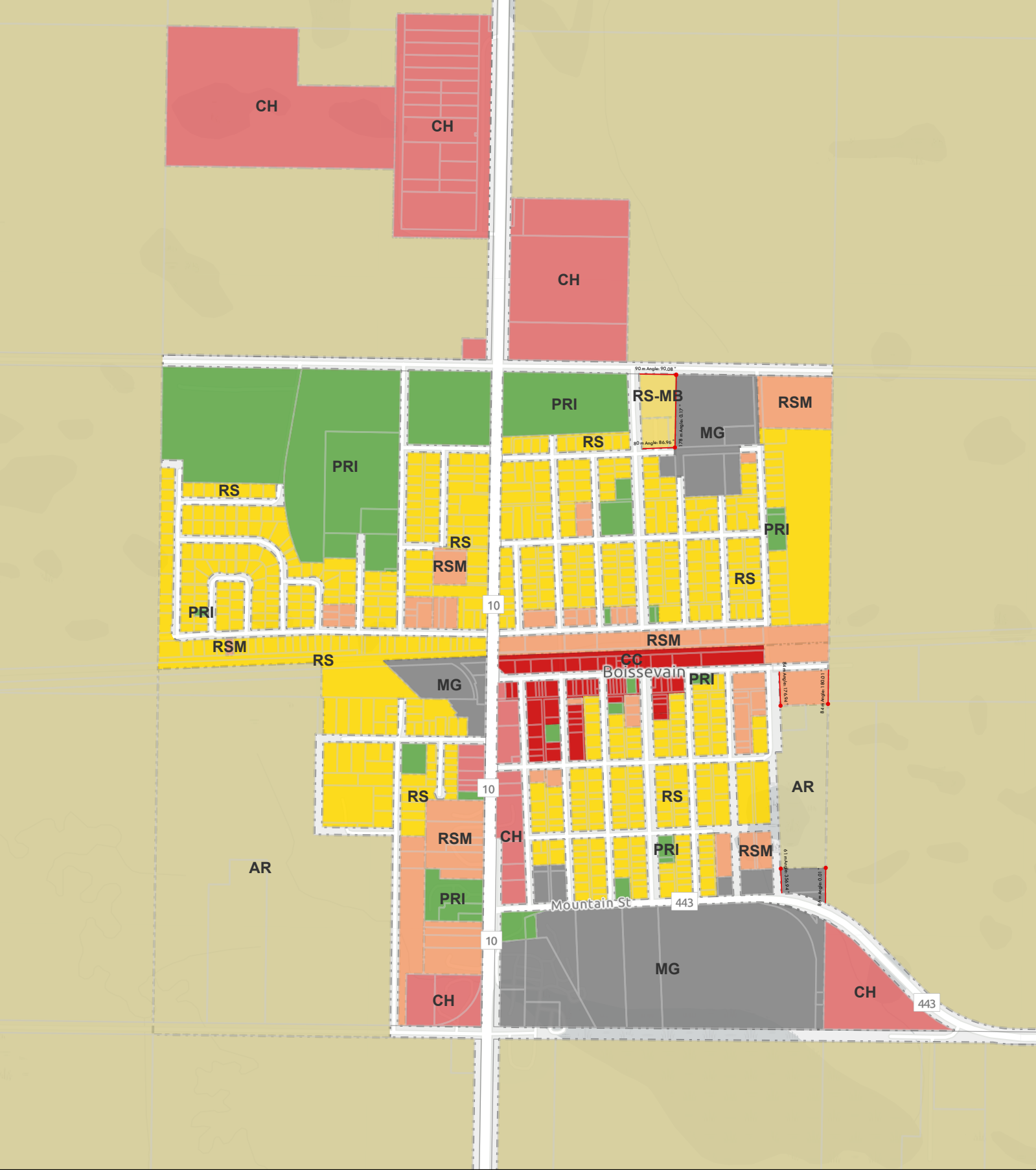
## **7 SCHEDULE “A”: ZONING MAPS**



Esri, NASA, NGA, USGS, Sources: Esri, TomTom, Garmin, FAO, NOAA, USGS, © OpenStreetMap contributors, and the GIS User Community

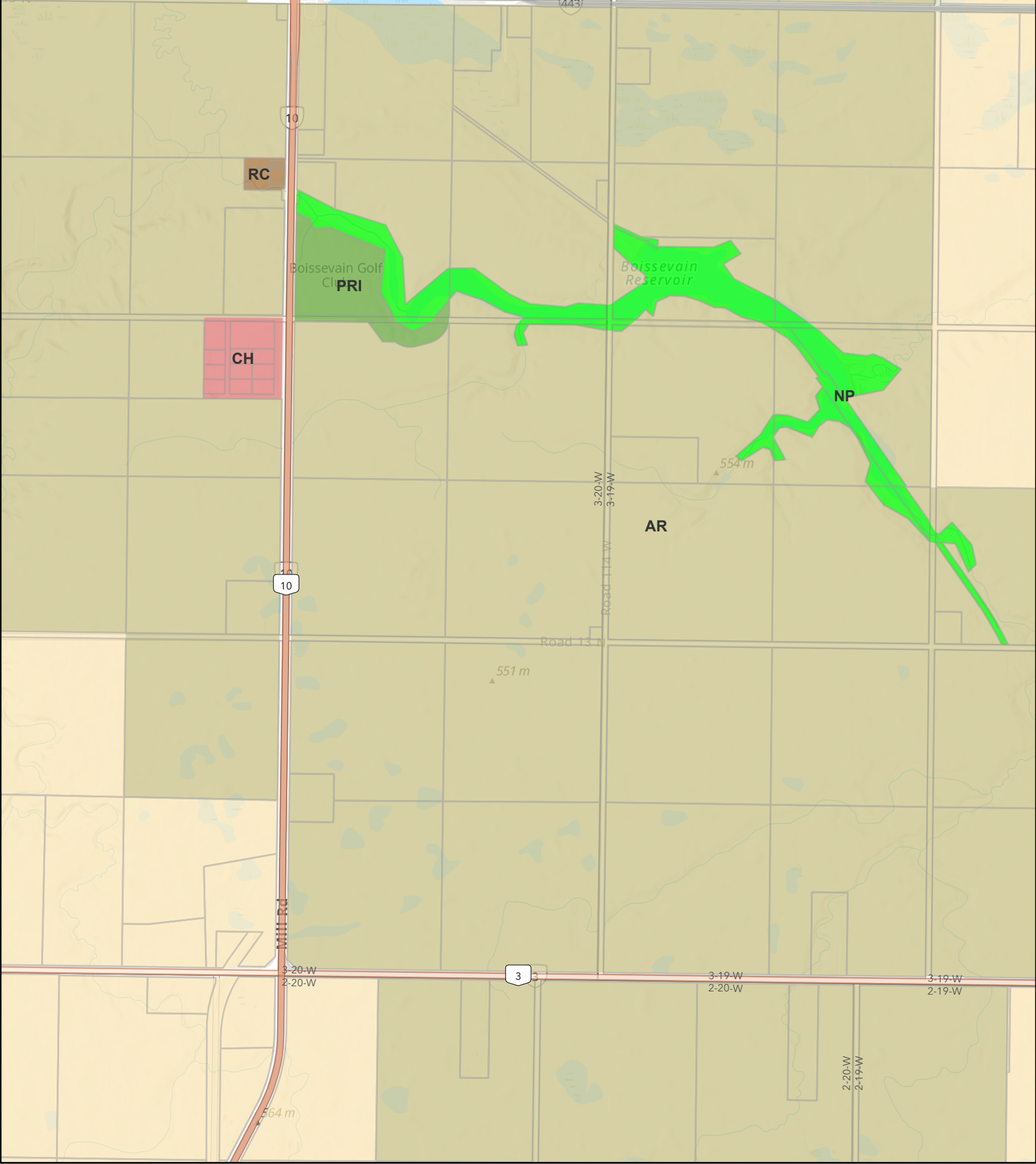
## Municipality of Boissevain-Morton Zoning By-Law Zoning Map - Rural

- |                              |                                    |   |                            |
|------------------------------|------------------------------------|---|----------------------------|
| AG - Agricultural General    | RS-MB - Residential Mobile         | MG - Industrial General                   | International Peace Garden |
| AR - Agricultural Restricted | RC - Rural Residential and Cottage | PRI - Parks, Recreation and Institutional |                            |
| RS - Residential Zone        | CH - Commercial Highway            | NP - Natural Protection                   |                            |
| RSM - Residential Mixed      | CC - Commercial Central            | Manitoba Provincial Parks                 |                            |



Municipality of Boishevain-Morton Zoning By-Law  
Zoning Map - Urban

- |                              |                                    |                         |   |
|------------------------------|------------------------------------|-------------------------|---|
| AG - Agricultural General    | RSM - Residential Mixed            | CH - Commercial Highway | PRI - Parks, Recreation and Institutional |
| AR - Agricultural Restricted | RS-MB - Residential Mobile         | CC - Commercial Central | NP - Natural Protection                   |
| RS - Residential Zone        | RC - Rural Residential and Cottage | MG - Industrial General | Dimensions                                |



**Municipality of Boissevain-Morton Zoning By-Law**  
**Zoning Map - Reservoir Area**

- |                              |                                    |                         |
|------------------------------|------------------------------------|-------------------------|
| AG - Agricultural General    | RSM - Residential Mixed            | CH - Commercial Highway |
| AR - Agricultural Restricted | RS-MB - Residential Mobile         | CC - Commercial Central |
| RS - Residential Zone        | RC - Rural Residential and Cottage | MG - Industrial General |

- |   |
|---|
| PRI - Parks, Recreation and Institutional |
| NP - Natural Protection                   |



0 0.17 0.35 0.7 1.05 1.4  
Kilometers Scale: 1:25,000

Esri, NASA, NGA, USGS, FEMA, Sources: Esri, TomTom, Garmin, FAO, NOAA, USGS, © OpenStreetMap contributors, and the GIS User Community

Data Sources:  
Assessment Parcels: Manitoba Property Assessment (Province of Manitoba, 2022)

## **8 SCHEDULE “B”: COMBINED USE TABLE**

Zone Abbreviations	AG	AR	RS	RSM	RS-MB	RC	CC	CH	MG	PRI	NP	Bulk Standard Size	Use-Specific Standard
<b>AGRICULTURAL AND ANIMAL-RELATED USES</b>													
Agriculture, General	P	P									P	Large	
Agriculture, Specialized	P	P									P	Small	4.1.1
Agro-Industrial Business	C	C						C	P			Small	
Agricultural Equipment Sales and Service	C	C						P	P			Small	
Animal Keeping or Stables	P	P				C						Small	4.1.2
Apiary (Beekeeping)	P	P				C	C			C	P	Small	4.1.3
Cannabis Cultivation and Processing Facility	C								C			Small	
Livestock Operation (10 to 299 Animal Units)	P	C										Large	4.1.4
Livestock Operation (300 or more Animal Units)	C	C										Large	4.1.4
Pet Shelter or Sales	C	C						C				Small	
Veterinary Clinic	C	C					C	P	P			Small	
<b>RESIDENTIAL USES</b>													
Dwelling, Single-Unit	P	P	P	C		P						Small	4.2.1
Dwelling, Two-Unit			P	P								Medium	4.2.2
Dwelling, Multi-Unit			P	P			P					Large	4.2.3
Live-Work Unit				P			P	C				Small	4.2.4
Mobile Home	P	P	C		P	C						Small	4.2.5
Mobile Home Park					P							Large	4.2.6
Tiny Home	P	P	P		P	C						Small	4.2.5
Tiny Home Pocket Neighbourhood				C	P	C						Large	4.2.6
Secondary Suite	C*	C*	P	P								Small	4.2.7
<b>OFFICE AND RETAIL USES</b>													
Brewery / Distillery / Winery	C*	C*					P	P	P			Small	
Cannabis Retail Establishment							C	C				Small	4.3.1
Casino or Gaming Establishment							C	C	C	C		Small	
Drive-Through Establishment							C	C	C			Small	4.3.2
Food / Beverage Service Establishment				C		C	P	P	C	P		Small	
Gas Station							C	P				Small	4.3.3
Indoor Amusement or Fitness Centre				C			P	P	C			Small	
Inn or Hotel				C		C	P	P				Medium	
Media Studio							C	C	C			Small	
Office				C			P	P	P			Small	
Parking Lot, Non-Accessory							C	C		P		Small	4.3.4
Personal Services				C			P	P	C			Small	
Retail (Small)				C		C	P	P	C	P		Small	
Retail (Large)							C	P	C			Large	
Towing and Storage Compound								C	P			Large	
Vehicle Sales and Service							C	P	P			Large	4.3.5
<b>INDUSTRIAL AND MANUFACTURING USES</b>													
Batch Plant or Chemical Manufacturing									C			Large	4.4.1
Bulk Fuel and Propane Sales and Service								C	C			Large	4.4.2
Building or Contracting Establishment							C	P	P			Medium	
Freight Terminal								C	P			Large	



Zone Abbreviations		AG	AR	RS	RSM	RS-MB	RC	CC	CH	MG	PRI	NP	Bulk Standard Size	Use-Specific Standard
	General Manufacturing							C	C	P			Medium	
	Hazardous Materials or Agrichemical Storage Facility	C							C	C			Large	4.4.3
	Industrial Service Shop								C	P			Medium	
	Lumber Yard							P	P	P			Medium	4.4.4
	Oil Battery	C											Small	
	Resource Harvesting and Extraction	C											Small	4.4.5
	Warehouse or Self-Storage Facility							C	P	P			Medium	
	Wrecking and Salvage Yard	C								C			Small / Large	
<b>PUBLIC AND INSTITUTIONAL BUILDINGS</b>														
	Arts and Cultural Establishment	C*	C*	C	C			P	P		P		Small	
	Assisted Living Facility				C			P			P		Large	
	Care Home			C	P						P		Medium	4.5.1
	Child Care, Home			P	P	P		P					Small	4.5.2
	Child Care Facility				C			P			C		Large	4.5.3
	Community Centre or Hall			C	C	C	C	P	P	C	P		Small	
	Crematorium								C	C			Medium	
	Emergency Services Station			C	C			P	P	P	P		Medium	
	Healthcare Facility							P			P		Medium	
	Place of Worship			P	C			P	C	C	P		Medium	
	Public Works Building	C	C					P	P	P	P		Small	
	Recreation Facility (Indoor)							P	P	C	P		Small	
	School			P	P	P					P		Large	
<b>PUBLIC AND INSTITUTIONAL OUTDOOR USES</b>														
	Campground						C		C		P		Small / Medium	4.6.1
	Cemetery	C	C								C		Small	4.6.2
	Golf Course										C		Medium	
	Marina or Public Docks						C				P		Large	
	Outdoor Event Space	C	C						C		P		Small	
	Park	C	C	P	P	P	P	P	P		P	P	Small	4.6.3
	Public Utility	P	P	P	P	P	P	P	P	P	P	P	N/A	2.21
	Recreation Facility (Outdoor)	C	C						C		P		Small	
	Solid Waste Disposal or Composting Site	C							C	C	C		Large	2.17
	Wastewater Treatment Site (Sewage Lagoon)	C	C								C		Large	2.17
	Wildlife Management or Conservation Area	P	P								P	P	Small	
<b>ONLY AS SECONDARY OR ACCESSORY USES</b>														
	Accessory uses, buildings and structures	P*	P*	P*	P*	P*	P*	P*	P*	P*	P*	P*	N/A	2.5
	Airfield or Landing Strip	C*									C*		N/A	4.7.1
	Bed and Breakfast	P*	P*	P*	P*	P*	P*						N/A	4.7.2
	Carport	P*	P*	P*									N/A	
	Home Industry	C*	C*				C*						N/A	4.7.3
	Home Occupation	P*	P*	P*	C*	P*	P*	P*					N/A	4.7.4
	Outdoor Pool or Hot Tub	P*	P*	P*	P*	P*	P*	P*	P*		P*		N/A	4.7.5
	Pole Shed or Fabric Building	P*	P*	P*	P*	P*	P*		P*	P*	P*		N/A	4.7.6
	Shipping Container (Accessory)	P*	P*					C*	C*	P*	C*		N/A	4.7.7

Zone Abbreviations		AG	AR	RS	RSM	RS-MB	RC	CC	CH	MG	PRI	NP	Bulk Standard Size	Use-Specific Standard
	Short-Term Rental	P*	P*	P*	P*	P*	P*	P*			P*		N/A	4.7.8
	Sign, Accessory	P*	P*	P*	P*	P*	P*	P*	P*	P*	P*	P*	N/A	4.7.9
	Sign, Advertising or Billboard	P*/C*	P*/C*					C*	C*	C*			N/A	4.7.10
	Solar Collector (Ground Mounted)	C*	C*	C*			C*		C*	P*	P*		N/A	4.7.11
	Solar Collector (Roof-top or Wall-Mounted)	P*	P*	P*	P*	P*	P*	P*	P*	P*	P*		N/A	4.7.11
	Telecommunications Tower (Accessory)	P*	P*	P*	P*	P*	P*	P*	P*	P*	P*	P*	N/A	4.7.12
	Temporary Building or Use	P*	P*	P*	P*	P*	P*	P*	P*	P*	P*	P*	N/A	4.7.13
	Wind Energy Generating System (Commercial)	C*	C*								C*		N/A	4.7.14
	Wind Energy Generating System (On-Site / Rooftop)	P*	P*	C*			P*	C*	P*	P*	P*		N/A	4.7.15
P = Permitted Use   C = Conditional Use   * Only as a secondary use														